

Resolute's Prevention and Emergency Measures

The principal measure that have been implemented at the Thunder Bay Mill Site include:

- Risk management system to ensure all risks are managed and mitigated;
- Equipment maintenance procedures and programs;
- Comprehensive training programs that include start up, shut down, emergency and other operational procedures;
- Network of high-technology surveillance and control systems;
- 24-hour monitoring of the process by qualified operators;
- Policies requiring all equipment or process changes endure a multi disciplinary evaluation and authorization process;
- Mechanical integrity program that meets or exceeds industrial standards;
- Environment, health and safety training for all employees and contractors;
- Regular emergency drills conducted in conjunction with the local fire department;
- Emergency response team in place 24 hours a day;
- Comprehensive emergency response plan;
- Preventative incident -investigation procedures;
- Regular internal and external audits to ensure risk management.

Resolute's facility attains excellent results by identifying hazards and implementing controls to eliminate injuries.

What to do?

In the event of a major industrial incident involving a toxic release...

How will the population be alerted?

In the event of an incident of this type, the population is at risk and will be notified immediately on local radio and television stations. Safety instructions will be broadcasted in the event of an accidental release into the atmosphere.

If you are contacted by an automated phone alert system or if you hear about an incident on the local radio or television:

Tune into local radio or TV Stations for details and stay tuned for updates.

In case the alarm is sounded:

- Unless otherwise instructed, immediately enter inside the closest building.
- Shelter in Place: tightly close all doors and windows, turn off all ventilation, heating, air exchange and air conditioning systems.
- Retrieve your first aid kit and keep it handy.
- Block any air vents in the room using wet towels, plastic film or tape
- Do not pick up your children from school. Teachers will apply the same instructions for the safety of your children.
- The safety and security of people in public areas (malls, hospitals etc.) will be managed by the personnel of those areas with the assistance of police and fire.
- If you are in a vehicle, immediately drive out of the affected zone as fast as possible while respecting speed limits and other traffic signs. Close your car windows and turn the heat or air conditioning in vehicle off.
- Tune into the local radio station and follow the instructions.
- Evacuation instructions will be broadcasted if necessary.
- Free up the phone lines for emergency services as needed.
- Do not leave your house or building until you've received information that there is an all-clear or you are instructed by the authorities to do so.



To avoid breathing the toxic substances

Quickly and safely enter inside the closest building.



To avoid the toxic substances entering inside a building

Do not stay outside. Close and block openings for windows and doors. Stop all ventilation.



For further instructions, listen to the radio

Comply with the instructions from the authorities.



To avoid exposure or exposing children

Do not pick up your children at school.



Call 911 only in case of emergency

Do not call 911 to obtain information. The phone lines must be kept free for emergency services to freely communicate with those impacted

Call 911 only if you have an emergency and need help.



INFORMATION BROCHURE ON RISK MANAGEMENT OF MAJOR INDUSTRIAL INCIDENT



Chlorine Dioxide



Remember to keep this Information Brochure handy!

About Resolute Forest Products

Resolute Forest Products is a global leader in the forest products industry with a diverse range of products, including market pulp, tissue, wood products, newsprint and speciality papers, which are marketed in close to 70 countries. The company owns or operates some 40 facilities, as well as power generation assets, in the United States and Canada.

Resolute has third-party certified 100% of its managed woodlands to internationally recognized sustainable forest management standards in the region.

Market pulp is one of the products manufactured at the Thunder Bay mill. This pulp can be found in everyday products including paper towels, coffee filters, disposable diapers, facial tissue and toilet paper. The Thunder Bay mill also produces newsprint. Annual capacity of the facility is 535,000 metric tons. The mill also employs over 400 people and contributes significantly to Resolute's \$430.2 million dollar economic impact in Northern Ontario.

Our Process

Chlorine Dioxide is a chemical compound with the formula ClO_2 . It is a yellowish-green gas. As one of several oxides of chlorine, it is a potent and useful oxidizing agent and is commonly used in water treatment and in Kraft mills for bleaching.



Thunder Bay Pulp & Paper Mill

2001 Neebing Avenue
Thunder Bay, Ontario P7E 6S3 Canada
Telephone | 807-475-2110
www.resolutefp.com



About ERCO Worldwide

We are a specialty chemical company in operation since 1893, service a variety of industries including pulp and paper, food processing, energy, water treatment, de-icing, fertilizers, oil and gas, and agriculture intermediates. Our head office is located in Toronto, Ontario, and we have nine manufacturing sites across the Americas. We also sell a technology to pulp and paper mills located around the world.

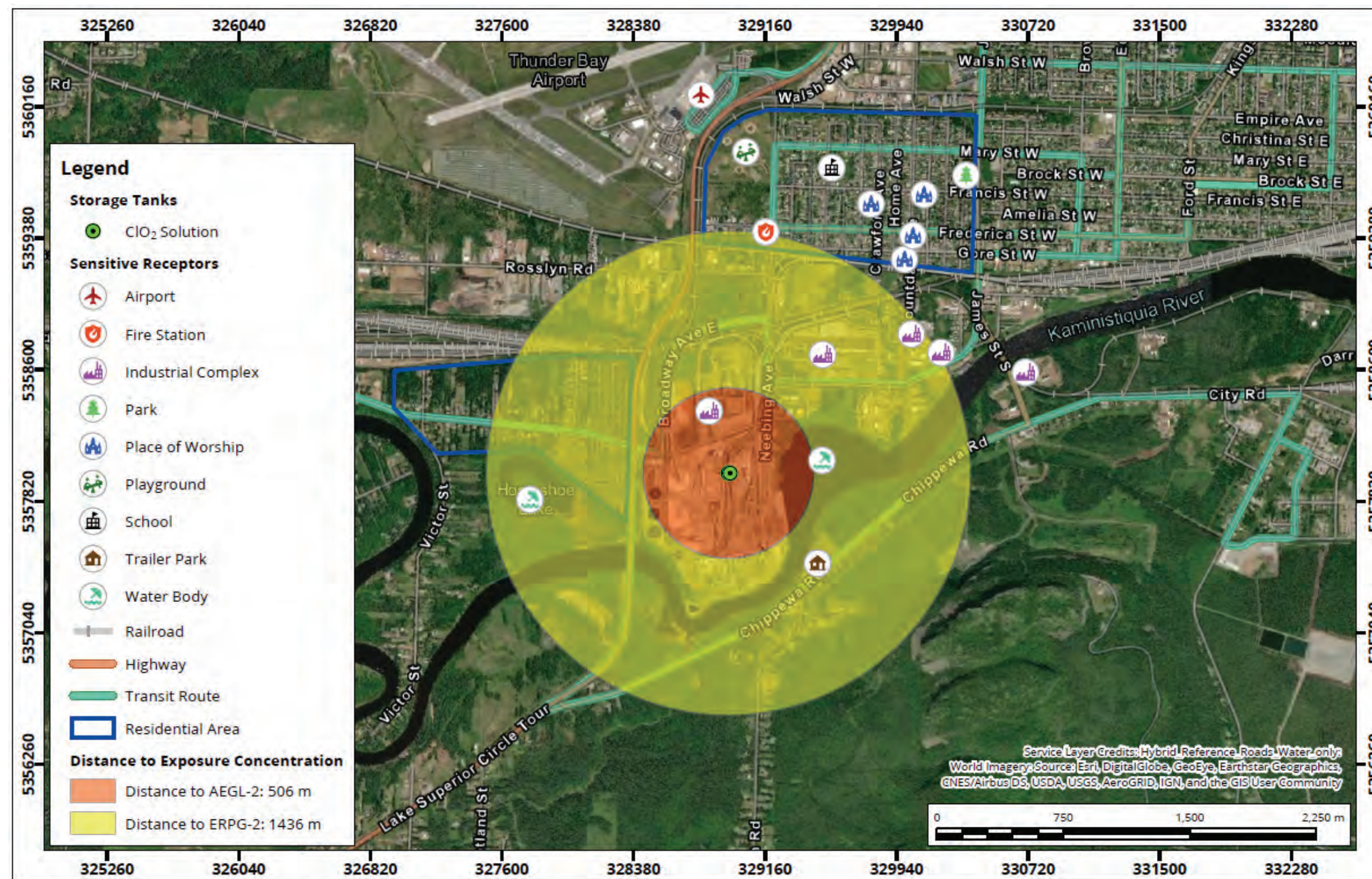
ERCO Worldwide is proud to be one of the founding members of Responsible Care® and a member of the Chemistry Industry Association of Canada (CIAC), Asociación Gremial de Industriales Químicos de Chile (ASIQUM A.G.) and the American Chemistry Council (ACC).

We are committed to the Principles of Sustainability and recognize our responsibility to be sensitive and responsible to community concerns

Potential Exposure Zone

The map displayed is the Emergency Planning Zone, or EPZ map, for Resolute Forest Products' facility.

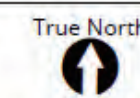
The Ground Level Endpoints on the map are the points surrounding the facility where air quality would be monitored in the event of an emergency.



Toxic Effects from Release of Chlorine Dioxide (ClO_2)

Scenario II.a - Major Spill from a Storage Tank at Typical Inventory

Map Projection: NAD 1983 UTM Zone 16N
Resolute Forest Products - Thunder Bay, Ontario



Drawn by: CUT Figure: 4
Approx. Scale: 1:32,000
Date Revised: Mar 6, 2020
Project #: 2000078



Quick Facts

The Characteristics of Chlorine Dioxide

- ▶ Yellow green gas
- ▶ Irritating chlorine-ozone aroma
- ▶ Used in water treatment and bleaching
- ▶ Boiling point is 11°C.
- ▶ A heavy gas with a specific gravity of 2.4 (where air = 1.0)
- ▶ Vapours are heavier than air and will have a tendency to stay close to the ground

Health Impacts

Although it is unlikely that such an incident would occur, exposure to Chlorine Dioxide could potentially cause the following health impacts

Route of Exposure	Description
Eye Contact	Severe irritant. Exposure may cause visual disturbance, i.e., seeing halos around lights.
Skin Absorption	May be absorbed, causing tissue and blood cell damage.
Skin Contact	Gas and solutions are strong irritants.
Inhalation	If inhaled, may experience respiratory irritation.